

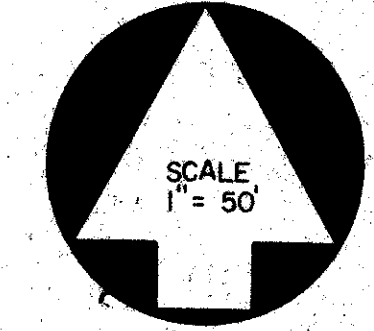
42/3

LEE'S CROSSING PLAT NO. 2 (P.U.D.)

LYING IN THE EAST ONE-HALF OF SECTION 34, TOWNSHIP 44 SOUTH, RANGE 42 EAST,
PALM BEACH COUNTY, FLORIDA.

JANUARY, 1981

SHEET 3 OF 5

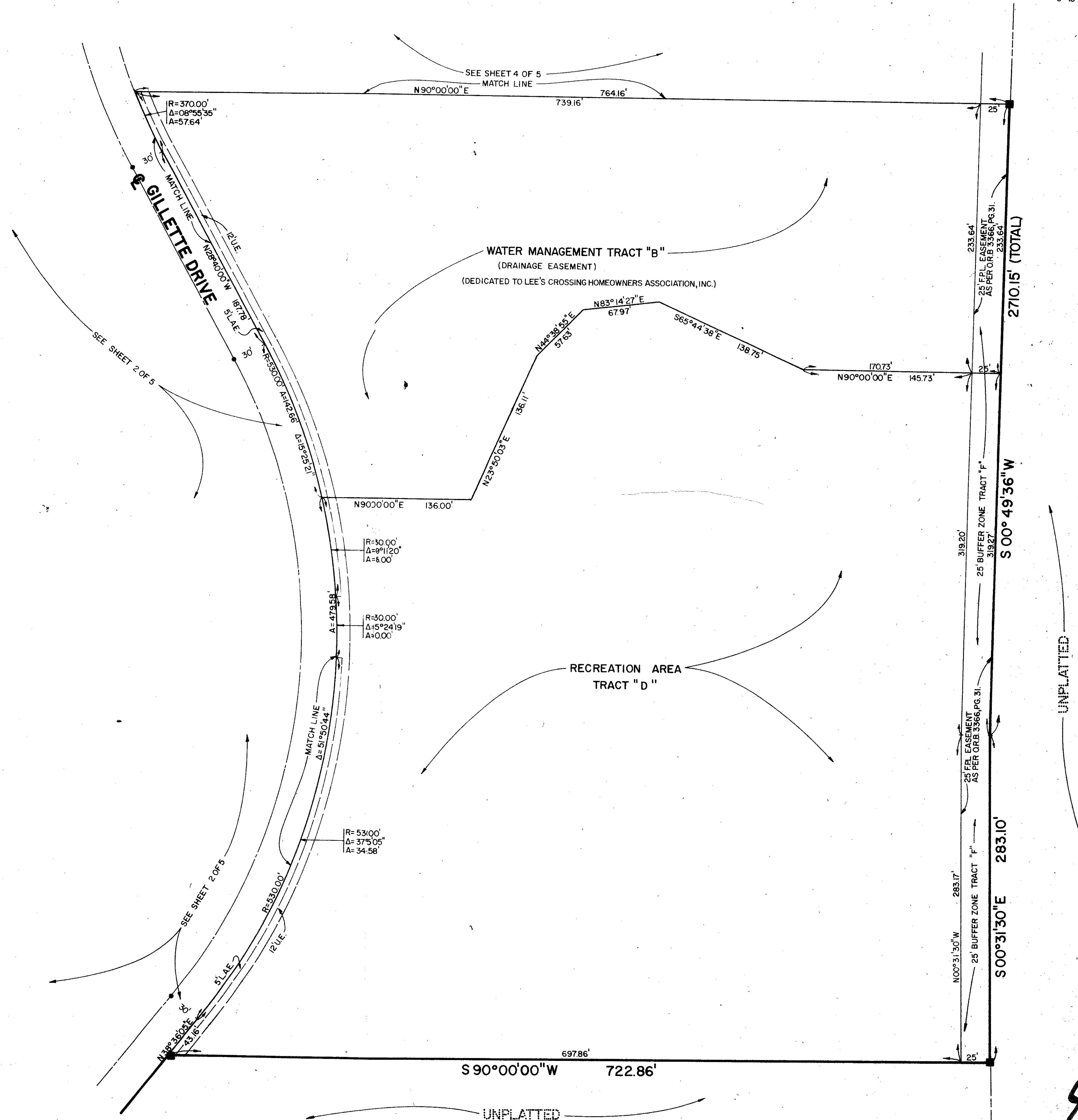


0 10 20 30 40 50 60 70 80 90 100
SCALE IN FEET

3

STATE OF FLORIDA
COUNTY OF PALM BEACH
THIS PLAT WAS FILED FOR
RECORD AT
THIS DAY OF
AD, 1981 AND DULY RECORDED
IN PLAT BOOK ON PAGES
AND

JOHN B. DUNKLE, CLERK
CIRCUIT COURT
BY: DC.



UNPLATTED

UNPLATTED

42/3 0271-309

